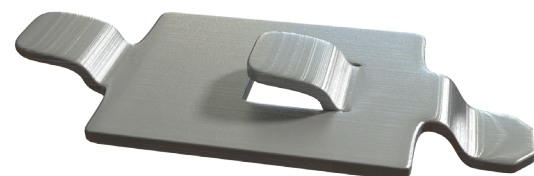


Shelving Components

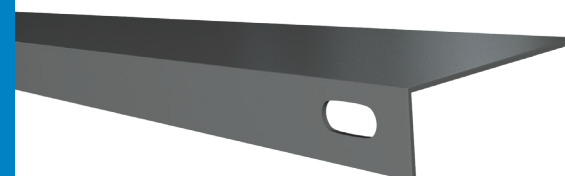
SHELF CLIP
12 gauge
Zinc coated finish



**SHELF
REINFORCEMENTS**

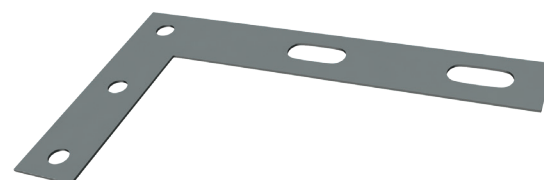
SIZE	WT.
36"	1.5
42"	1.7
48"	1.9

12 gauge x 1 1/2" Cold Rolled Steel
Powder coated finish

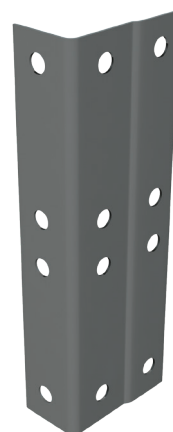


**ANGLE CORNER
BRACES (Gussets)**

We suggest A.C.B. be used on all corners front and back when back braces are eliminated to allow easy access from front or back of shelving. Powder coated finish.



POST SPLICE PLATE
14 gauge Cold Rolled Steel
Powder coated finish



Industrial Metal Shelving Storage System



944 Fisher • Houston, Texas 77018 • 713.957.1111 • Fax: 713.957.1133 • 1-800-474.3531
www.dixieshelving.com



"American Made Products Holding the Weight Since 1958"

Shelving Components

CLASS "O" & "I"

Dixie Industrial Shelving is designed for normal loads. Class "O" is made from 20 gauge prime cold rolled steel. Class "I" is made from 18 gauge prime cold rolled steel. Both are powder coated.

CLASS "I-A"

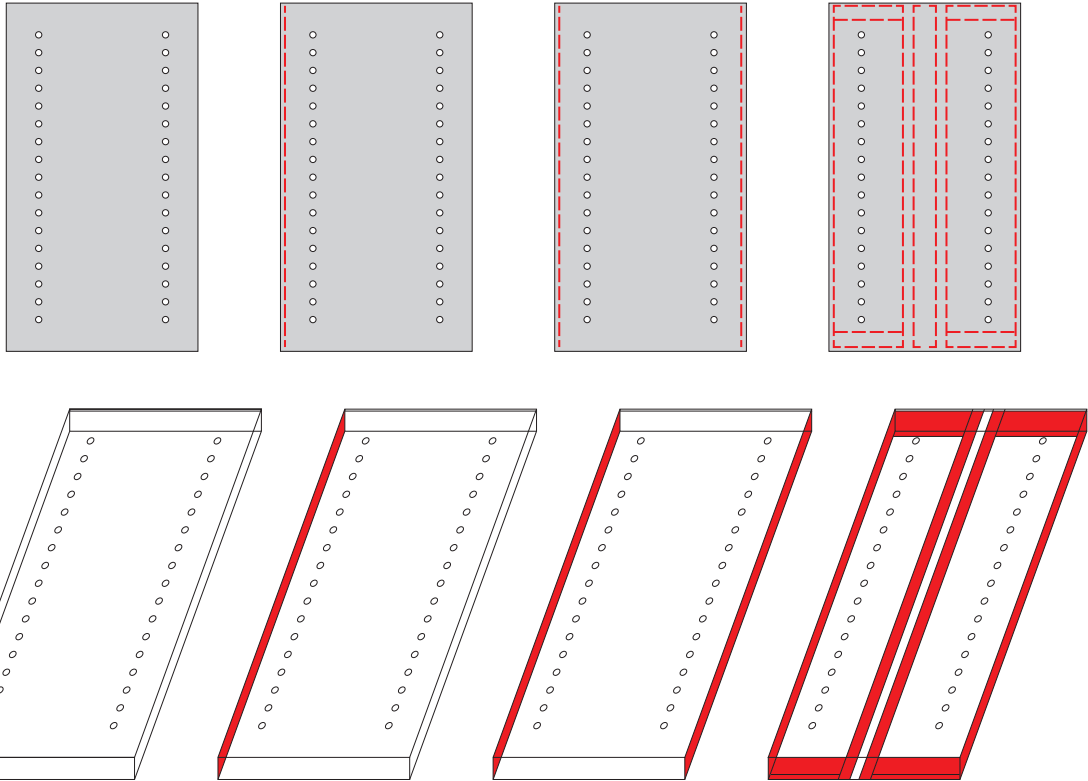
Reinforced front to Dixie Class "I" Industrial Shelving has been added a 12 gauge angle bar 11/2" x 1" in the front flange. This added front strength supports shock for climbing or rough handling.

CLASS "II"

Reinforced front and back 12 gauge steel angle bars 11/2" x 1" in the front and rear flange for greater load capacity.

CLASS "III"

For heavier loads, front and rear flange re-inforcing with 12 gauge angle bars 11/2" x 1". Additional center reinforcing steel "Hat" section is welded under the entire length of the shelf.



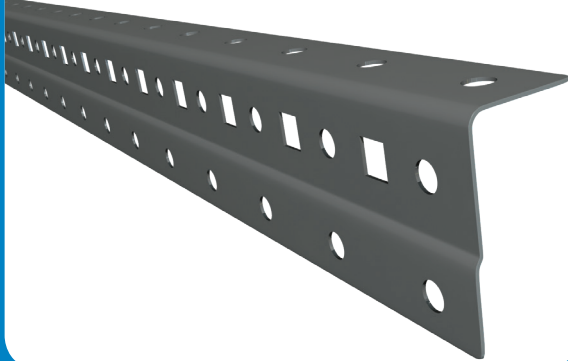
LOAD CARRYING CAPACITIES - POUNDS PER SHELF

Determined on an evenly distributed basis and not on impact load.

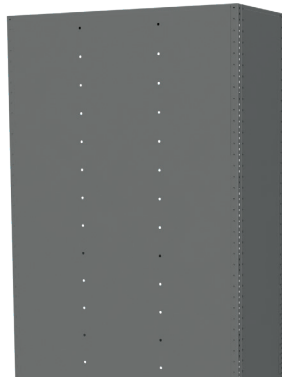
SIZE	CLASS "O"	CLASS I	CLASS I-A	CLASS II	CLASS III
36 X 12	450	775	905	1205	2000
36 X 15	430	765	895	1200	2000
36 X 18	420	760	885	1180	1600
36 X 24	400	750	875	1100	1600
36 X 30	N/A	600	765	1000	1550
36 X 36	N/A	500	750	990	1450
42 X 12	N/A	475	600	920	1300
42 X 15	N/A	470	590	905	1280
42 X 18	N/A	465	575	880	1260
42 X 24	N/A	455	565	810	1240
42 X 30	N/A	445	560	765	1230
42 X 32	N/A	440	550	700	1175
42 X 36	N/A	425	550	700	1175
48 X 12	N/A	320	415	660	1200
48 X 15	N/A	315	410	645	1200
48 X 18	N/A	310	405	585	875
48 X 24	N/A	305	400	580	750
48 X 30	N/A	300	390	475	675
48 X 36	N/A	300	385	425	600

Shelving Components

HEIGHT	WT. (LBS)	POST
73"	4.8	Punched on 1 1/2" centers
85"	5.5	14 gauge cold rolled steel
97"	6.2	Front leg - 1" side leg - 1
109"	6.9	15/16". Powder coated finish
121"	8.0	
145"	9.4	



SIZE	WT. (LBS)	BACK SHEETS
36" X 85"	21.1	Sheets longer than 85"
42" X 85"	24.6	are 2 pc. 24 gauge steel.
48" X 85"	28.1	Powder coated finish



SIZE	WT. (LBS)	END SHEETS
12" X 85"	5.5	24 gauge steel. Sheets
15" X 85"	7.9	longer than 85" are 2 pc.
18" X 85"	9.3	Powder coated finish
24" X 85"	12.6	
30" X 85"	16.1	
36" X 85"	19.4	



END BRACES		BACK BRACES	
SIZE	WT.	SIZE	WT.
2" w	.9	36" w	2.7
5" w	1.2	42" w	2.9
8" w	1.4	48" w	3.5
4" w	2.2		
0" w	2.5		
2" w	2.6		
6" w	2.7		

Furnished in pairs 1" wide
Powder coated finish



SHELF DIVIDER

12" X 6"	24" X 6"
12" X 12"	24" X 12"
12" X 18"	24" X 18"
18" X 6"	24" X 24"
18" X 12"	36" X 6"
18" X 18"	36" X 12"
18" X 24"	36" X 18"
	36" X 24"



FULL LENGTH DIVIDER

Attaches to shelf above and below for extra strength. Clear opening will be 1 1/2" less than divider height.

Full opening divider
Powder coated finish