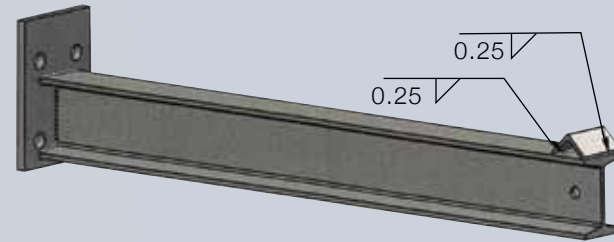


Anchor

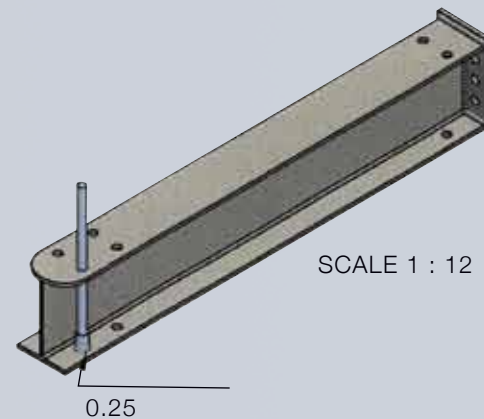
*5/8 x 4 1/4 Wedge Anchor

*3/4 Nuts & Bolts - Grade 5

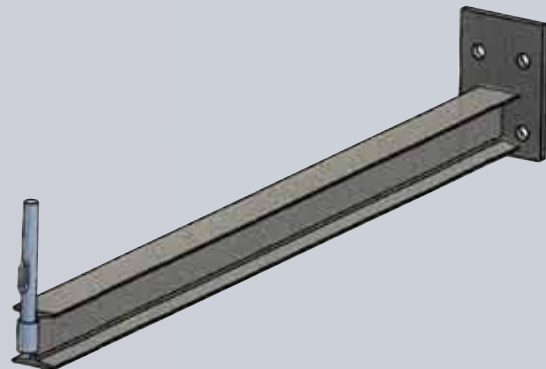
I-Beam Arm with Tab Stop



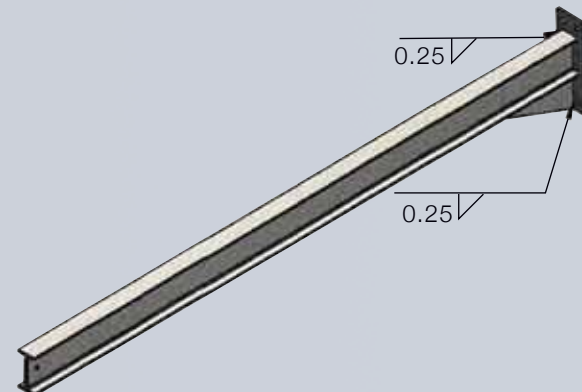
Wide Flange Base with Pipe Stop



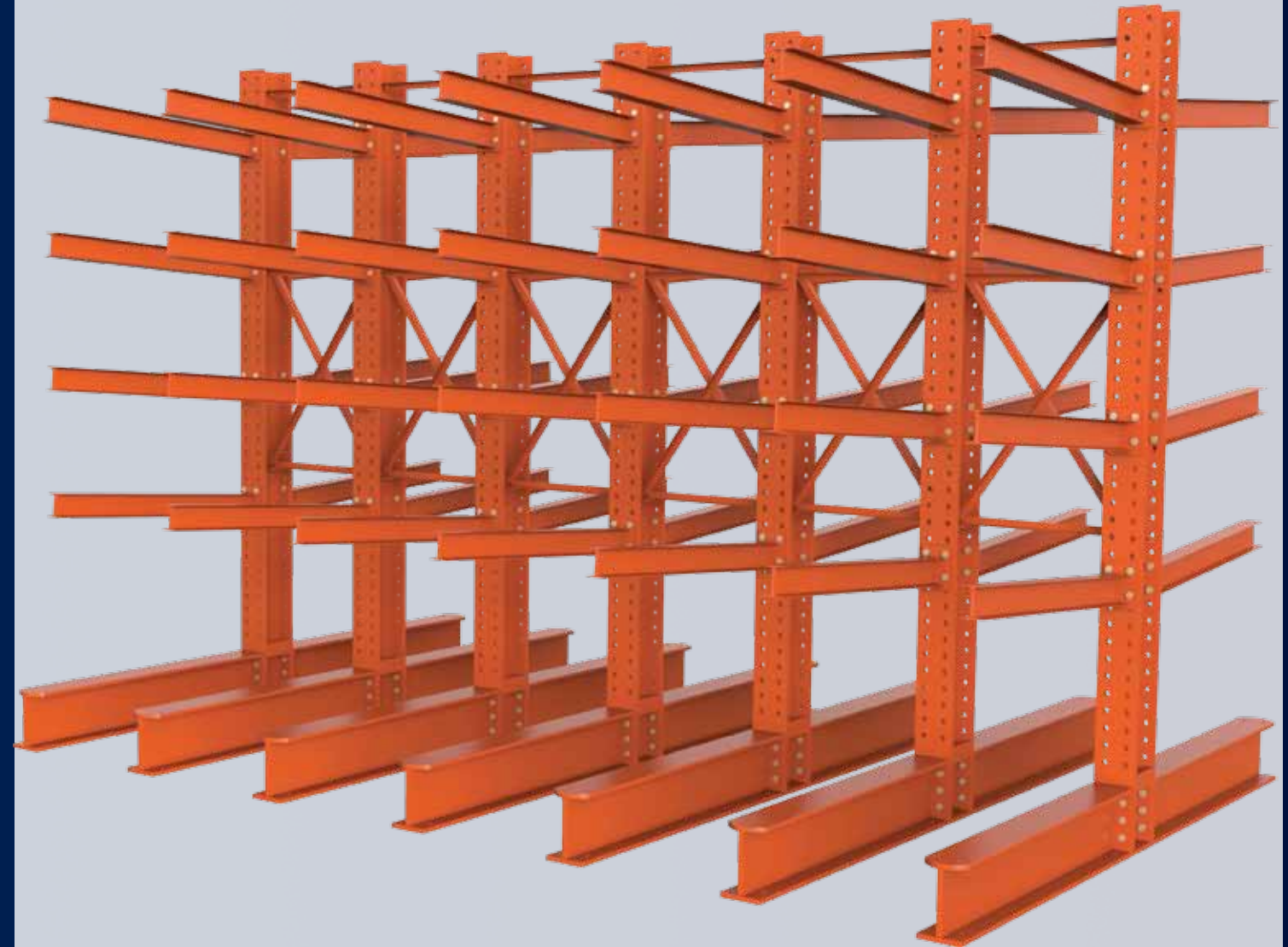
I-Beam Arm with Pipe Stop



I-Beam Arm with Gusset

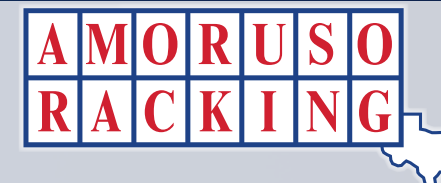


Cantilever Racking Storage System



944 Fisher • Houston, Texas 77018 • 713.957.1111 • Fax: 713.957.1133

www.amorusoracking.com



Today's Organization is Tommorrow's Profits

I-Beams



3” I-Beam

S3x5.7	Capacity	Weight	Product #
24"	2,900	18.4	A243
36"	1,900	24.1	A363
48"	1,400	29.8	A483
52"	1,200	32.6	A523
60"	1,100	35.4	A603
72"	700	41.2	A723

4” I-Beam

S4x7.7	Capacity	Weight	Product #
24"	4,500	23.5	A244
36"	3,000	30.3	A364
48"	2,200	38.0	A484
52"	2,000	41.8	A524
60"	1,700	45.7	A604
72"	1,300	53.4	A724

5” I-Beam

S5x10.0	Capacity	Weight	Product #
24"	6,200	29.5	A245
36"	4,100	39.6	A365
48"	3,000	49.5	A485
52"	2,700	54.0	A525
60"	2,400	59.6	A605
72"	2,000	69.5	A725

6” I-Beam

S6x12.5	Capacity	Weight	Product #
24"	7,700	35.1	A246
36"	5,100	47.6	A366
48"	3,800	60.1	A486
52"	3,500	65.0	A526
60"	3,100	72.6	A606
72"	2,500	85.1	A726



Grade 5: 3/4” Nuts and Bolts are uniform throughout the cantilever racking system.

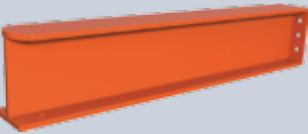
Columns

Columns are made up of 13/16" holes on 4" centers designed to bolt into 4-hole 1/2" plates.

There is a 6, 8, or 10 hole pattern at the bottom of the columns to attach to the base.

- All component lengths and capacities are determined by the customer's needs.
- Engineered drawings are recommend for achieving the most efficient capacity.
- Arm must be attached and used on both sides to achieve a double-sided capacity strength and stability.

* COLUMN CAPACITIES DO NOT INCLUDE BASE LEVEL; ARM WEIGHT MUST BE DEDUCTED FROM COLUMN CAPACITIES; COLUMN CAPACITIES IN ITALICS INDICATE THAT A TAIL BASE MAY BE REQUIRED FOR SINGLE SIDED RACKS TO MEET HEIGHT TO DEPTH RATIO OF 6:1.



Arm Length	Column Height	WF 818	WF 1022	WF 1226
24"	120"	15,300	22,200	32,600
	144"	14,100	21,800	30,900
	192"	11,600	19,100	28,000
	240"	9,300*	15,900*	24,700*
36"	120"	12,800	18,500	25,800
	144"	11,200	17,300	24,900
	192"	9,500	15,500	22,900
	240"	7,800	13,300	20,500
48"	120"	12,300	16,800	23,600
	144"	10,200	15,600	22,200
	192"	8,000	13,100	19,400
	240"	6,800	11,500	17,600
52"	120"	10,800	15,100	21,800
	144"	9,700	14,800	21,200
	192"	7,700	12,200	19,000
	240"	6,400	10,900	16,800
60"	120"	9,800	13,900	19,200
	144"	8,600	13,200	18,900
	192"	7,000	12,700	18,500
	240"	6,000	10,100	15,500
72"	120"	7,800	11,700	16,700
	144"	7,400	11,500	16,500
	192"	6,800	11,100	16,200
	240"	5,300	9,000	14,500

Bases

Uses a 6, 8, or 10 bolt flange to securely attach the tower to the base. There are 4 holes in the base for the concrete anchors to increase stability. Connecting plates are 6" x 1/2" plates.

WF 8X18 (6 Bolt)	Weight	Product #	WF 10X22 (8 Bolt)	Weight	Product #	WF 12X26 (10 Bolt)	Weight	Product #
24"	43.5	B24818	24"	55.0	B241022	24"	65.0	B241226
36"	61.5	B36818	36"	77.0	B361022	36"	91.0	B361226
48"	79.5	B48818	48"	99.0	B481022	48"	117.0	B481226
52"	88.5	B52818	52"	107.0	B521022	52"	127.0	B521226
60"	99.0	B60818	60"	121.0	B601022	60"	143.0	B601226
72"	117.0	B72818	72"	143.0	B721022	72"	169.0	B721226

X-Braces Sets the spacing between the columns and acts as a stabilizer.

Size	Weight	Weight	Product Number
2½ x 2½ x 3/16	X-Brace	Strut	
30"	31.0	7.7	X-30
42"	37.0	10.8	X-42
48"	39.5	12.3	X-48
60"	48.0	15.4	X-60
72"	53.8	18.5	X-72



Struts

