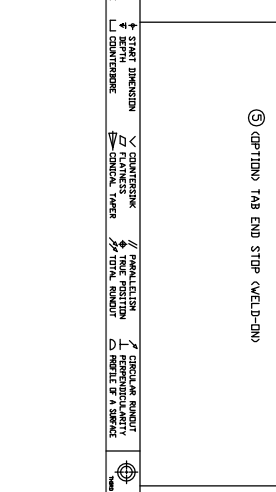
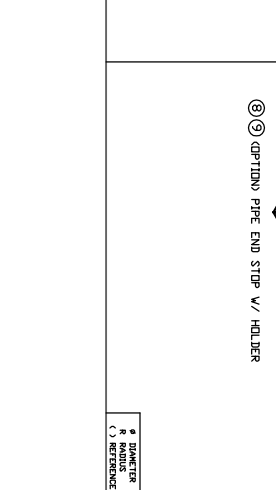
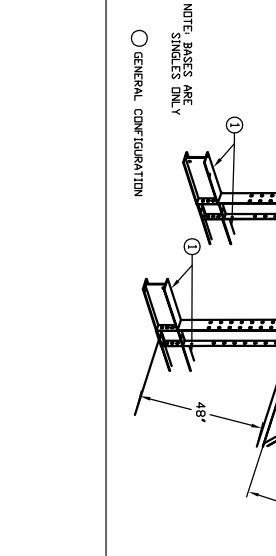
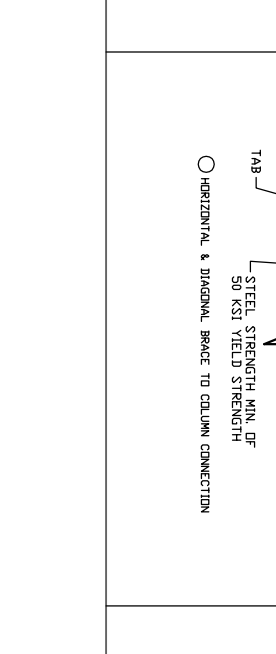


STANDARD X-BRACE LENGTHS

CANB-2460 OVERALL LENGTH 65'-4 1/8"	CANB-8460 OVERALL LENGTH 98'-3 1/8"
CANB-2460 OVERALL LENGTH 65'-4 1/8"	CANB-8460 OVERALL LENGTH 98'-3 1/8"
CANB-4860 OVERALL LENGTH 74'-1 7/8"	CANB-10660 OVERALL LENGTH 117'-3 1/4"
CANB-4860 OVERALL LENGTH 74'-1 7/8"	CANB-10660 OVERALL LENGTH 117'-3 1/4"
CANB-7260 OVERALL LENGTH 83'-3 3/4"	CANB-13260 OVERALL LENGTH 138'-2 3/8"
CANB-7260 OVERALL LENGTH 83'-3 3/4"	CANB-13260 OVERALL LENGTH 138'-2 3/8"

○ STANDARDS LIST



NOTES:

- ALL FASTENERS ARE HEX HEAD GRADE 5
- ALL CONNECTIONS ARE SHOP WELDED USING MIG ERWDS-6.
- MAXIMUM DEFLECTION IN CANTILEVER ARMS TO BE LENGTH/180.
- ALL STEEL COMPONENTS ARE 46 KSI YIELD MINIMUM.

NO. OF FIELD BRACE 0188

NO. OF FIELD BRACE 0188

SHEET 1 OF 1

AMORUSO RACKING

DESIGNED BY: [Signature]

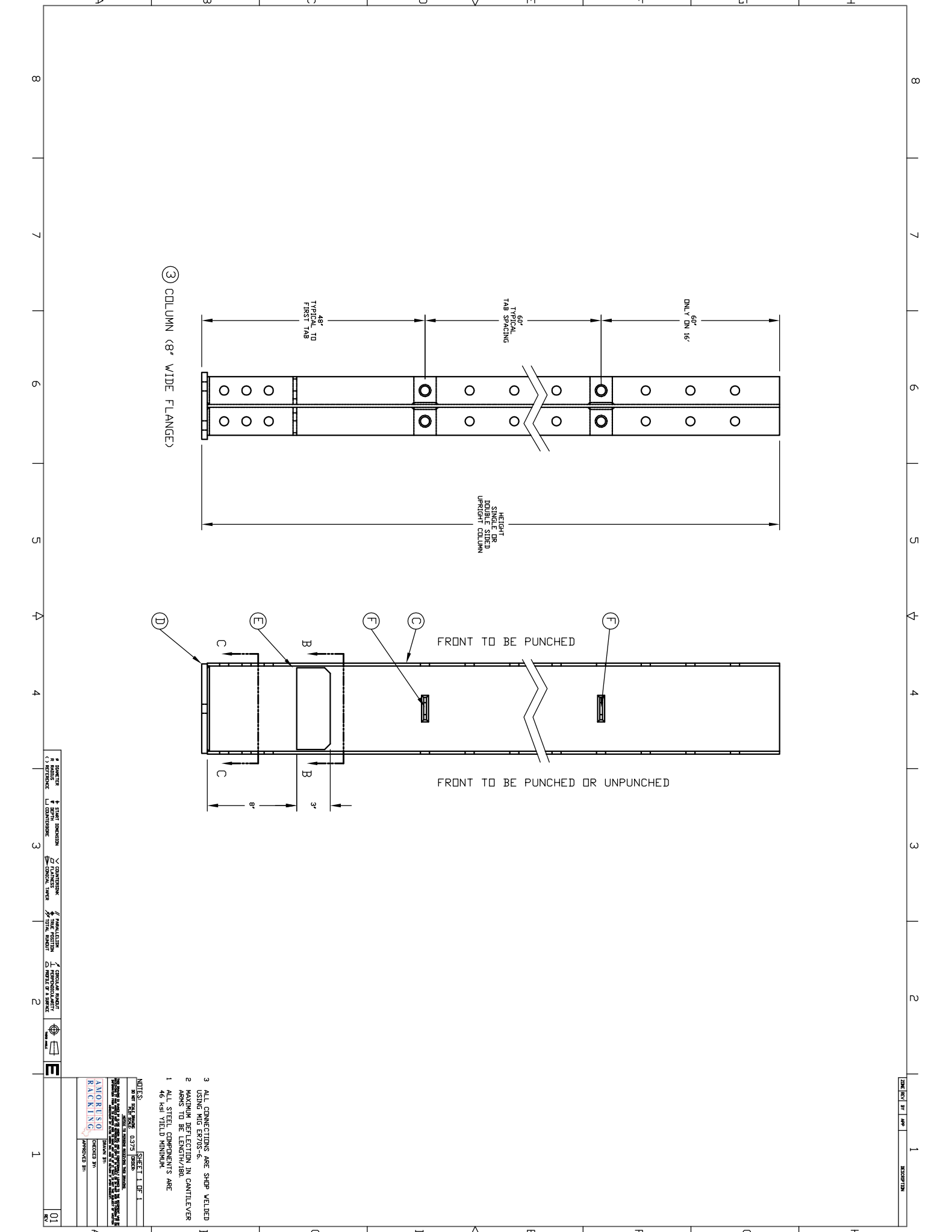
CHECKED BY: [Signature]

APPROVED BY: [Signature]

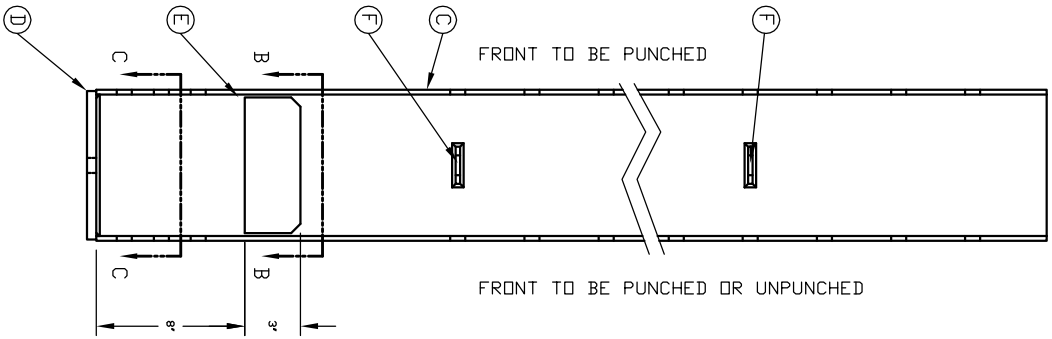
DRAWING NUMBER 03

CANTILEVER





③ COLUMN (8" WIDE FLANGE)



- 3 ALL CONNECTIONS ARE SHOP WELDED USING MIG EFFORTS-60
- 2 MAXIMUM DEFLECTION IN CANTILEVER ARMS TO BE LENGTH/H/180
- 1 ALL STEEL COMPONENTS ARE 46 KSI YIELD MINIMUM

NOTES:  
 1. SEE SHEET 01 FOR DETAILS  
 2. SEE SHEET 01 FOR DETAILS  
 3. SEE SHEET 01 FOR DETAILS

DESIGNED BY	APPROVED BY
CHECKED BY	DATE
PROJECT NO.	
DATE	

DESIGNED BY	APPROVED BY
CHECKED BY	DATE
PROJECT NO.	
DATE	

DESIGNED BY	APPROVED BY
CHECKED BY	DATE
PROJECT NO.	
DATE	

DESIGNED BY	APPROVED BY
CHECKED BY	DATE
PROJECT NO.	
DATE	

DESIGNED BY	APPROVED BY
CHECKED BY	DATE
PROJECT NO.	
DATE	

DESIGNED BY	APPROVED BY
CHECKED BY	DATE
PROJECT NO.	
DATE	

DESIGNED BY	APPROVED BY
CHECKED BY	DATE
PROJECT NO.	
DATE	

DESIGNED BY	APPROVED BY
CHECKED BY	DATE
PROJECT NO.	
DATE	

DESIGNED BY	APPROVED BY
CHECKED BY	DATE
PROJECT NO.	
DATE	

DESIGNED BY	APPROVED BY
CHECKED BY	DATE
PROJECT NO.	
DATE	

DESIGNED BY	APPROVED BY
CHECKED BY	DATE
PROJECT NO.	
DATE	

DESIGNED BY	APPROVED BY
CHECKED BY	DATE
PROJECT NO.	
DATE	

DESIGNED BY	APPROVED BY
CHECKED BY	DATE
PROJECT NO.	
DATE	

DESIGNED BY	APPROVED BY
CHECKED BY	DATE
PROJECT NO.	
DATE	

DESIGNED BY	APPROVED BY
CHECKED BY	DATE
PROJECT NO.	
DATE	

DESIGNED BY	APPROVED BY
CHECKED BY	DATE
PROJECT NO.	
DATE	

DESIGNED BY	APPROVED BY
CHECKED BY	DATE
PROJECT NO.	
DATE	

DESIGNED BY	APPROVED BY
CHECKED BY	DATE
PROJECT NO.	
DATE	

DESIGNED BY	APPROVED BY
CHECKED BY	DATE
PROJECT NO.	
DATE	

DESIGNED BY	APPROVED BY
CHECKED BY	DATE
PROJECT NO.	
DATE	

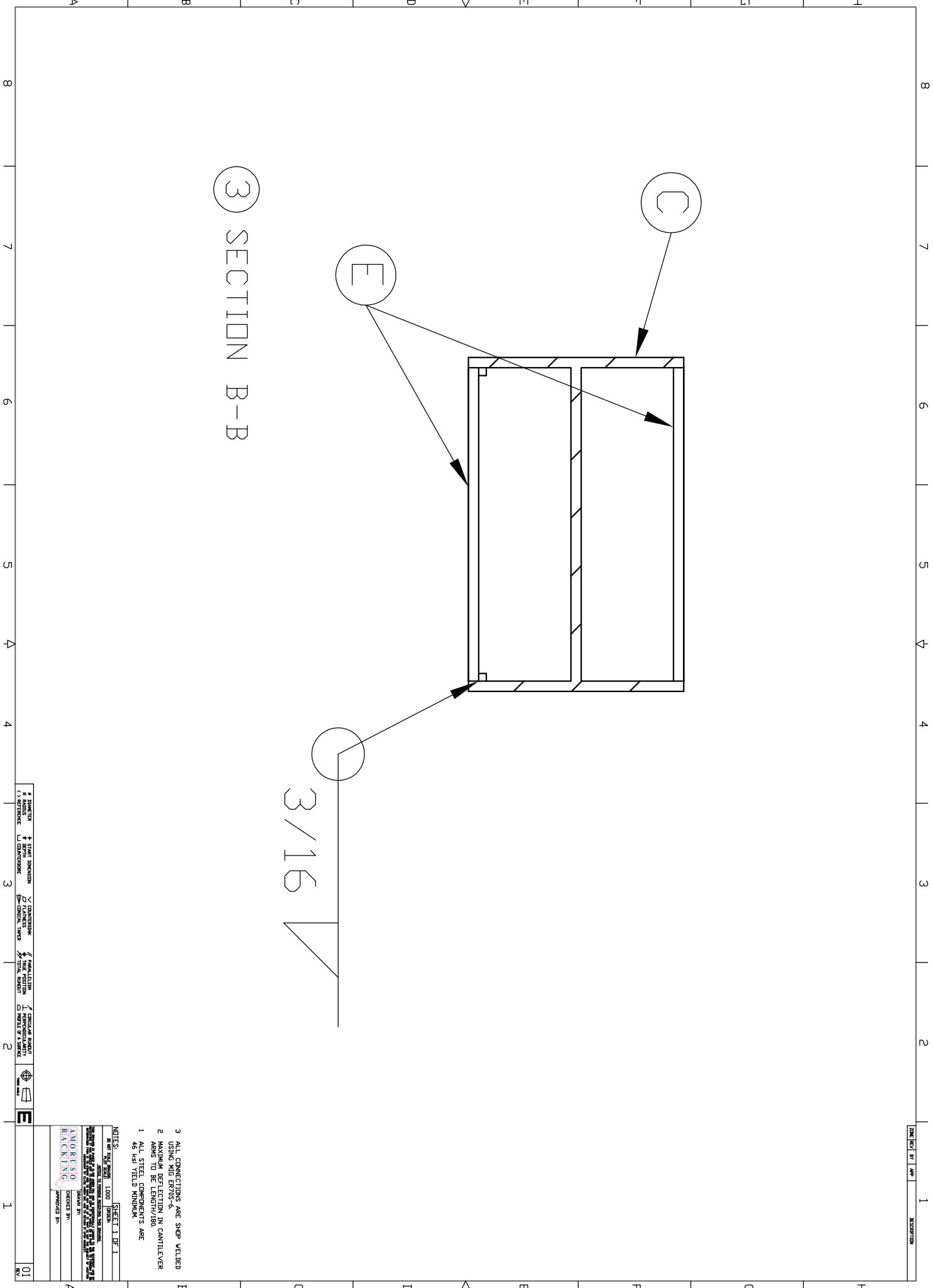
DESIGNED BY	APPROVED BY
CHECKED BY	DATE
PROJECT NO.	
DATE	

DESIGNED BY	APPROVED BY
CHECKED BY	DATE
PROJECT NO.	
DATE	

DESIGNED BY	APPROVED BY
CHECKED BY	DATE
PROJECT NO.	
DATE	

DESIGNED BY	APPROVED BY
CHECKED BY	DATE
PROJECT NO.	
DATE	





SECTION B-B

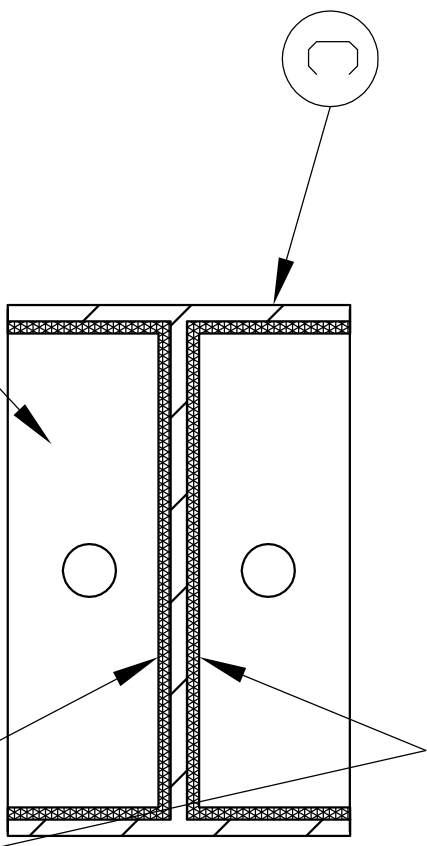
3/16

- 3 ALL CONNECTIONS ARE SHOP WELDED USING MIG ERRYS-6
- 2 MAXIMUM DEFLECTION IN CANTILEVER ARMS TO BE LENGTH/180
- 1 ALL STEEL COMPONENTS ARE 48 KSI YIELD MINIMUM

NOTES:  
 SHEET 1 OF 1  
 CHECKED BY: ANGELO RUSO  
 DRAWN BY: RACHINA  
 APPROVED BY:

□	SHIMMER	✓	COMPLETION	✓	MANUFACTURE	✓	INSPECTION
□	INSTALLATION	✓	CONNECTION	✓	CONNECTION	✓	CONNECTION
□	REVISION	✓	CONNECTION	✓	CONNECTION	✓	CONNECTION

01	REV
----	-----



3/16"

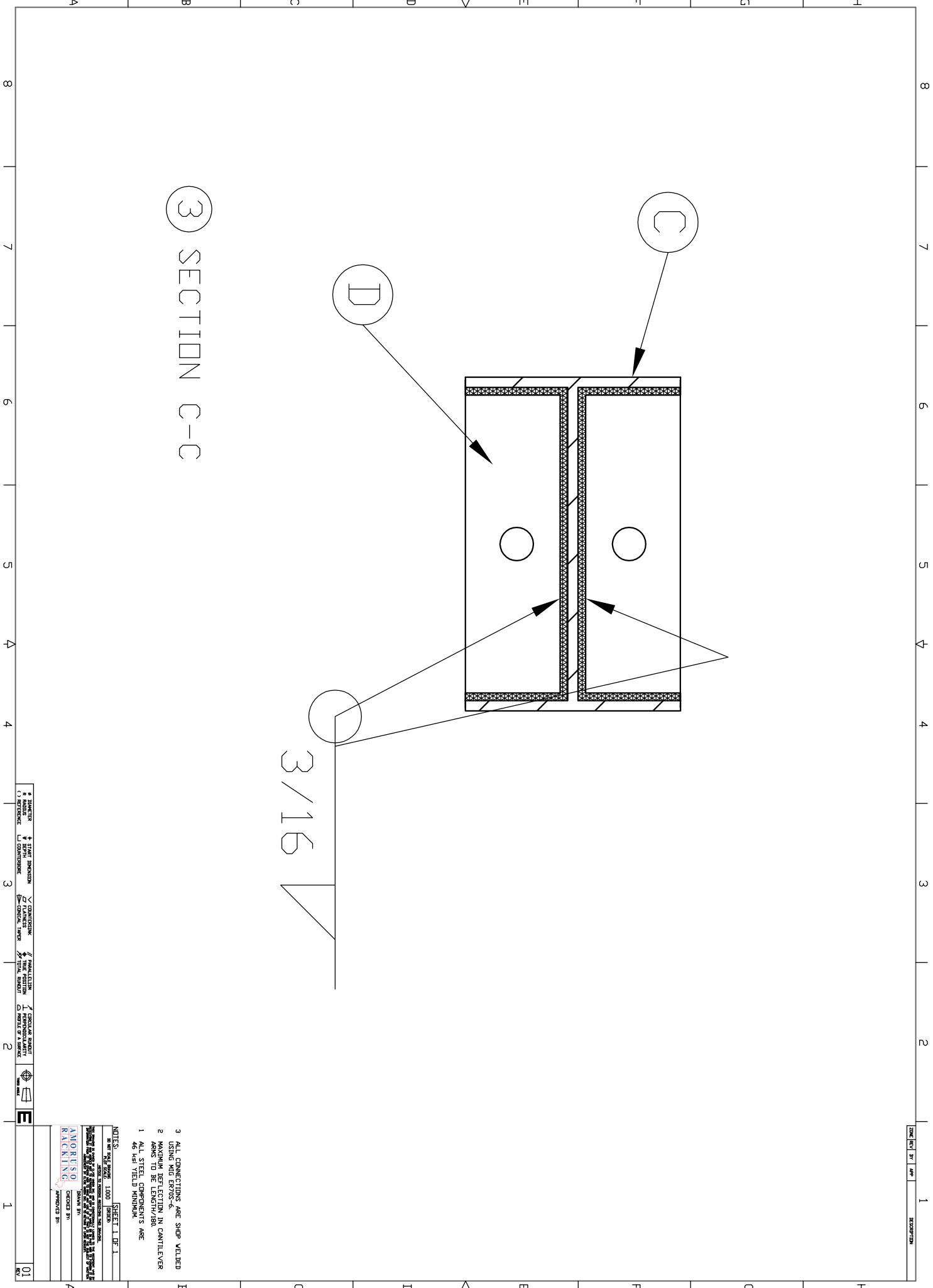
SECTION C-C

- 3 ALL CONNECTIONS ARE SHIP WELDED USING MIG ERRORS-6.
- 2 MAXIMUM DEFLECTION IN CANTILEVER ARMS TO BE LENGTH/180.
- 1 ALL STEEL COMPONENTS ARE 48 KSI YIELD MINIMUM.

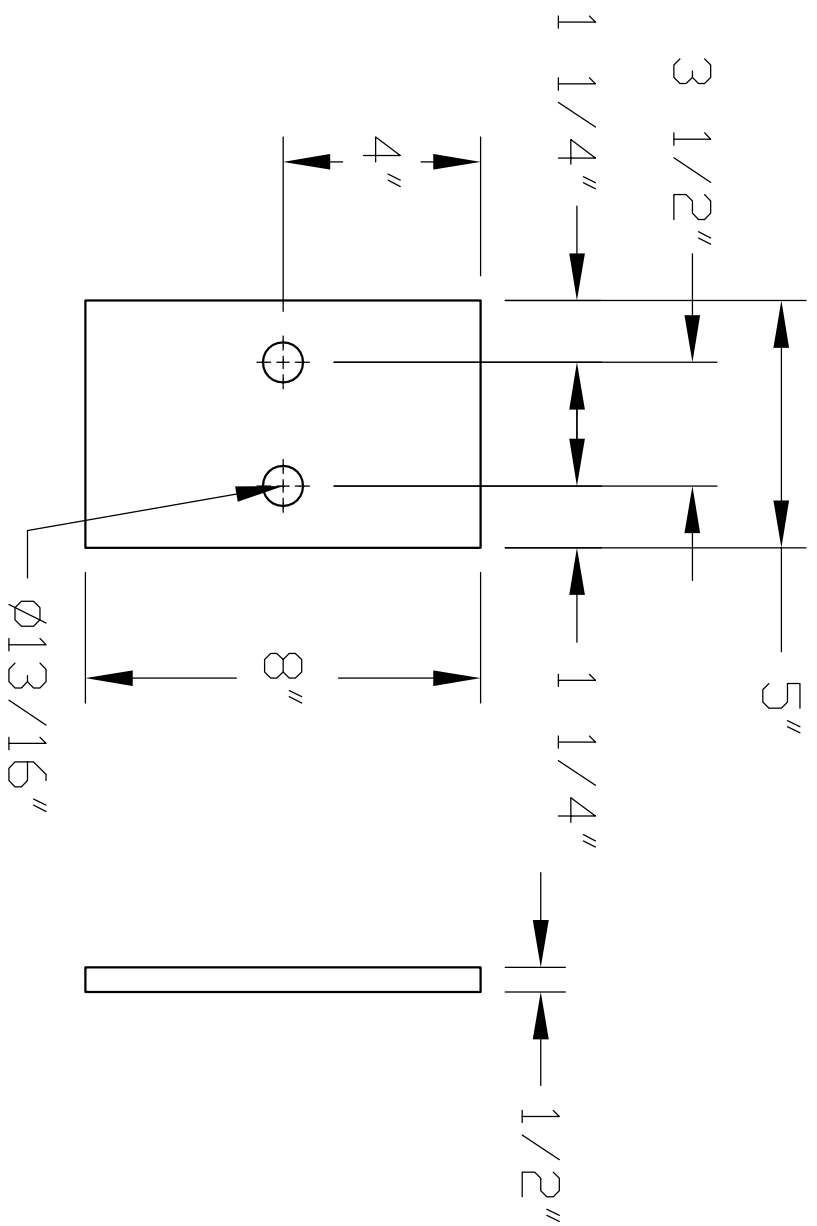
NOTES:  
 1000 SHEET 1 OF 1  
 10000 SHEET 1 OF 10

AMORUSO  
 KAKELINE  
 CHECKED BY:  
 APPROVED BY:

◆	BRACKET	✓	COMPLETION	✓	MANUFACTURE	✓	INSPECTION
○	REFERENCE	✓	CONSTRUCTION	✓	CONSTRUCTION	✓	CONSTRUCTION
○	REFERENCE	✓	CONSTRUCTION	✓	CONSTRUCTION	✓	CONSTRUCTION







ⓓ COLUMN PLATE (8" WIDE FLANGE)

- 3 ALL CONNECTIONS ARE SHIP WELDED USING MIG ERRORS-6.
- 2 MAXIMUM DEFLECTION IN CANTILEVER ARMS TO BE LENGTH/180
- 1 ALL STEEL COMPONENTS ARE 48 KSI YIELD MINIMUM

NOTES:  
 1000 DIMENSIONS ARE IN MILLIMETERS UNLESS OTHERWISE NOTED.  
 1/8" = 3.175 mm  
 1/4" = 6.35 mm  
 3/8" = 9.525 mm  
 1/2" = 12.7 mm  
 5/8" = 15.875 mm  
 3/4" = 19.05 mm  
 7/8" = 22.225 mm  
 1" = 25.4 mm  
 1 1/8" = 29.175 mm  
 1 1/4" = 31.75 mm  
 1 3/8" = 34.925 mm  
 1 1/2" = 38.1 mm  
 1 5/8" = 41.275 mm  
 1 3/4" = 44.45 mm  
 1 7/8" = 47.625 mm  
 2" = 50.8 mm  
 2 1/8" = 54.0 mm  
 2 1/4" = 57.15 mm  
 2 3/8" = 60.325 mm  
 2 1/2" = 63.5 mm  
 2 5/8" = 66.675 mm  
 2 3/4" = 69.85 mm  
 2 7/8" = 73.025 mm  
 3" = 76.2 mm  
 3 1/8" = 79.375 mm  
 3 1/4" = 82.55 mm  
 3 3/8" = 85.725 mm  
 3 1/2" = 88.9 mm  
 3 5/8" = 92.075 mm  
 3 3/4" = 95.25 mm  
 3 7/8" = 98.425 mm  
 4" = 101.6 mm  
 4 1/8" = 104.775 mm  
 4 1/4" = 107.95 mm  
 4 3/8" = 111.125 mm  
 4 1/2" = 114.3 mm  
 4 5/8" = 117.475 mm  
 4 3/4" = 120.65 mm  
 4 7/8" = 123.825 mm  
 5" = 127 mm  
 5 1/8" = 130.175 mm  
 5 1/4" = 133.35 mm  
 5 3/8" = 136.525 mm  
 5 1/2" = 139.7 mm  
 5 5/8" = 142.875 mm  
 5 3/4" = 146.05 mm  
 5 7/8" = 149.225 mm  
 6" = 152.4 mm  
 6 1/8" = 155.575 mm  
 6 1/4" = 158.75 mm  
 6 3/8" = 161.925 mm  
 6 1/2" = 165.1 mm  
 6 5/8" = 168.275 mm  
 6 3/4" = 171.45 mm  
 6 7/8" = 174.625 mm  
 7" = 177.8 mm  
 7 1/8" = 180.975 mm  
 7 1/4" = 184.15 mm  
 7 3/8" = 187.325 mm  
 7 1/2" = 190.5 mm  
 7 5/8" = 193.675 mm  
 7 3/4" = 196.85 mm  
 7 7/8" = 199.925 mm  
 8" = 203.2 mm  
 8 1/8" = 206.375 mm  
 8 1/4" = 209.55 mm  
 8 3/8" = 212.725 mm  
 8 1/2" = 215.9 mm  
 8 5/8" = 219.075 mm  
 8 3/4" = 222.25 mm  
 8 7/8" = 225.425 mm  
 9" = 228.6 mm  
 9 1/8" = 231.775 mm  
 9 1/4" = 234.95 mm  
 9 3/8" = 238.125 mm  
 9 1/2" = 241.3 mm  
 9 5/8" = 244.475 mm  
 9 3/4" = 247.65 mm  
 9 7/8" = 250.825 mm  
 10" = 254 mm

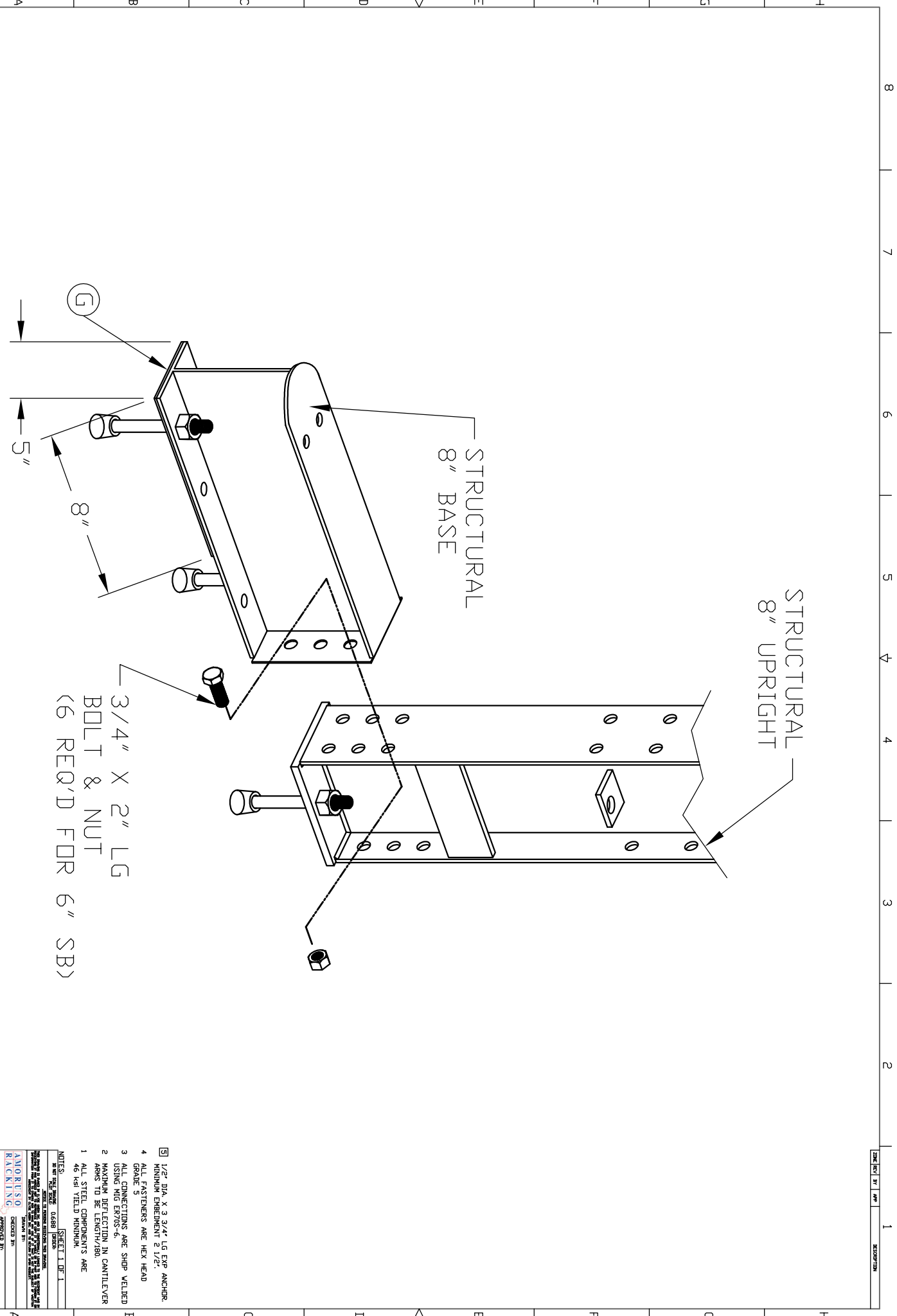
APPROVED BY: **AMORUSO**  
 CHECKED BY: **RAKELINE**

◆	BRACKET	◆	START DIMENSION	✓	COMPOSITE	✓	MANUFACTURE	✓	PROTECT SURFACE
○	REFERENCE	□	END DIMENSION	○	CORNER TAPER	✗	TRIAL SHAWT	○	REMOVE BY 2. SIDE

SHEET 1 OF 1  
 DATE: 10/10/2018  
 PROJECT: 1000  
 DRAWING: 1000  
 01





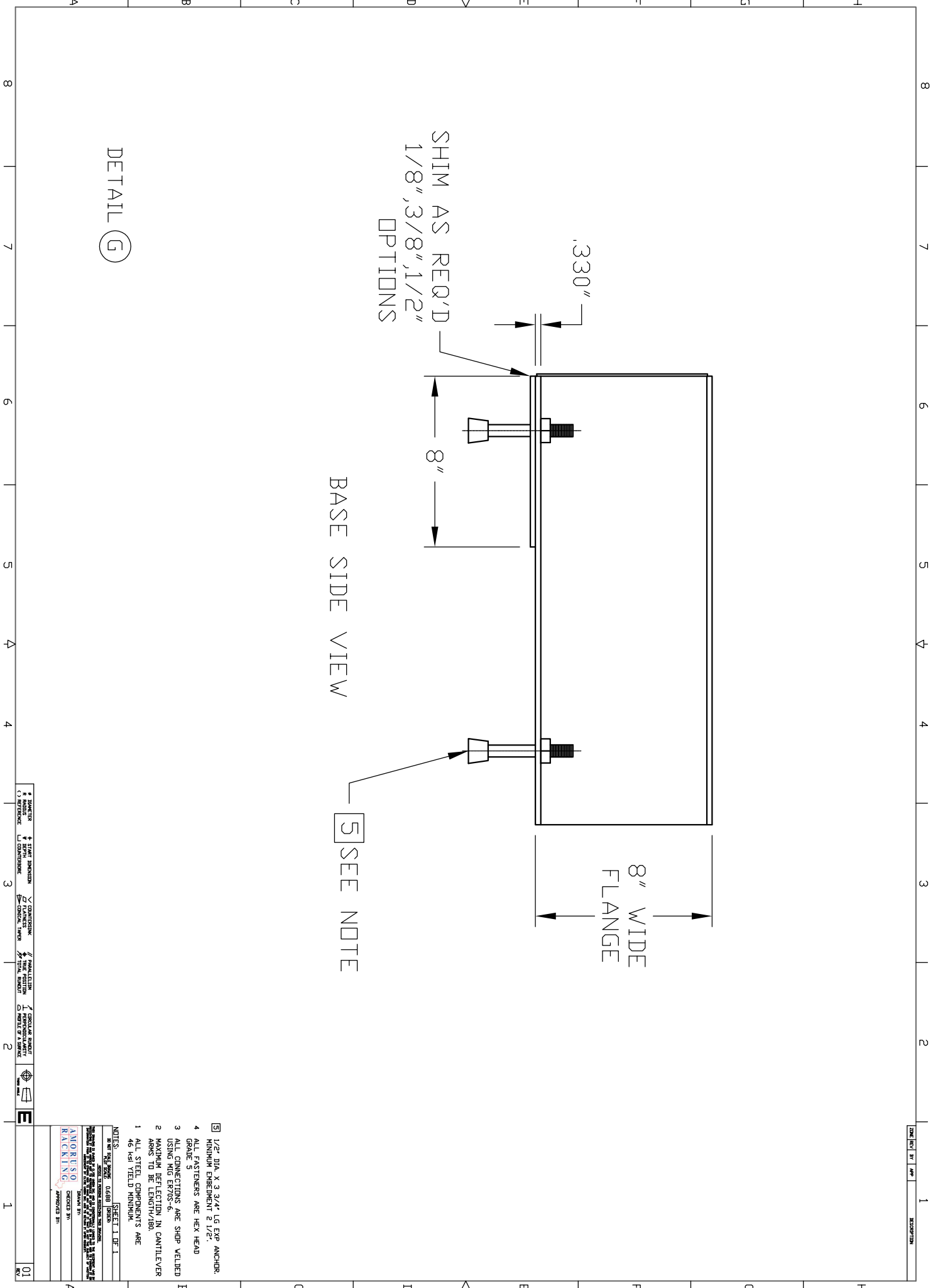


- 5) 1/2" DIA. X 3 3/4" LG EXP ANCHOR. MINIMUM EMBEDMENT 2 1/2".
- 4) ALL FASTENERS ARE HEX HEAD GRADE 5.
- 3) ALL CONNECTIONS ARE SHOP WELDED USING MIG ER70S-6.
- 2) MAXIMUM DEFLECTION IN CANTILEVER ARMS TO BE LENGTH/180.
- 1) ALL STEEL COMPONENTS ARE 46 KSI YIELD MINIMUM.

NOTES:  
 SEE THE FOLLOWING SHEETS FOR THE COMPLETE DRAWING.  
 SHEET 1 OF 1  
 APPROVED BY: [Signature]  
 CHECKED BY: [Signature]  
 DRAWN BY: [Signature]

1	2	3	4	5	6	7	8
1	2	3	4	5	6	7	8

1	2	3	4	5	6	7	8
1	2	3	4	5	6	7	8



SHIM AS REQ'D  
 1/8", 3/8", 1/2"  
 OPTIONS

.330"

8"

8" WIDE  
 FLANGE

BASE SIDE VIEW

5 SEE NOTE

DETAIL (G)

◆	WORKER	◆	FIELD DIMENSION	✓	CONSTRUCTION	✓	MANUFACTURING	✓	APPROVALS
○	REFERENCE	□	CONNECTION	○	CONNECTION	○	CONNECTION	○	CONNECTION

- 5) 1/2" DIA. X 3 3/4" L.G. EXP. ANCHOR. MINIMUM EMBEDMENT 2 1/2".
- 4) ALL FASTENERS ARE HEX HEAD GRADE 5.
- 3) ALL CONNECTIONS ARE SHOP WELDED USING MIG ER70S-6.
- 2) MAXIMUM DEFLECTION IN CANTILEVER ARMS TO BE LENGTH/180.
- 1) ALL STEEL COMPONENTS ARE 46 KSI YIELD MINIMUM.

NOTES:  
 SHEET 1 OF 1  
 DATE: 11/20/2018  
 DRAWN BY: ANGELO RAVENHILL  
 CHECKED BY: ANGELO RAVENHILL  
 APPROVED BY: ANGELO RAVENHILL

1	DESCRIPTION	1
2	DESCRIPTION	2
3	DESCRIPTION	3
4	DESCRIPTION	4
5	DESCRIPTION	5
6	DESCRIPTION	6
7	DESCRIPTION	7
8	DESCRIPTION	8

