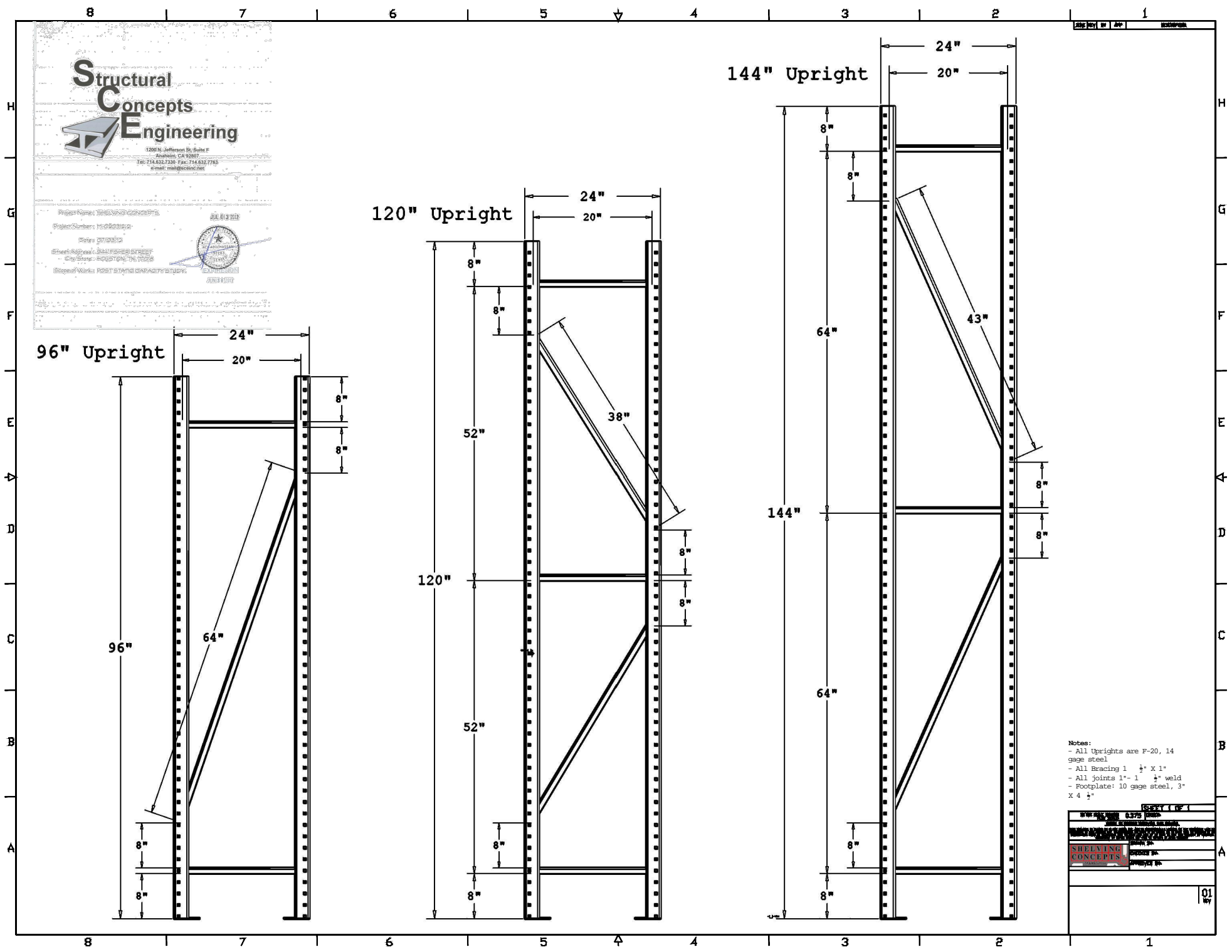


Structural Concepts Engineering
1200 N. Jefferson St. Suite F
Anaheim, CA 92807
Tel: 714.632.7330 Fax: 714.632.7763
e-mail: mail@scceinc.net

Project Name: SHELVING CONCEPTS
Project Number: MC0303120
Date: 07/03/12
Street Address: 544 FISHER STREET
City/State: HOUSTON, TX 77006
Scope of Work: POST STATIC CAPACITY STUDY

JUL 03 2012
ARCHITECT
SEAL
EXPIRATION
JUN 18 2013

SHEET 1 OF 1	
DATE: 07/03/12	BY: [redacted]
CHK: [redacted]	APP: [redacted]
SHELVING CONCEPTS	
01	



8

7

6

5

4

3

2

1

Structural Concepts Engineering

1200 N. Jefferson St. Suite F
Alhambra, CA 91807
Tel: 714.632.7730 Fax: 714.632.7763
e-mail: mail@scceinc.net

Project Name: **SHEDDING CONCEPTS**

Project Number: **100000000**

Date: **07/20/10**

Sheet Address: **334 FERRIS STREET**

City/State: **HOUSTON, TX 77058**

Scope of Work: **POST STAND CAPACITY STUDY**

JUL 03 2010

2010

2010

2010

2010

2010

2010

2010

2010

2010

2010

2010

2010

2010

2010

2010

2010

2010

2010

2010

2010

2010

2010

2010

2010

2010

2010

2010

2010

2010

2010

2010

2010

2010

2010

2010

2010

2010

2010

2010

2010

2010

2010

2010

2010

2010

2010

2010

2010

2010

2010

2010

2010

2010

2010

2010

2010

2010

2010

2010

2010

2010

2010

2010

2010

2010

2010

2010

2010

2010

2010

2010

2010

2010

2010

2010

2010

2010

2010

2010

2010

2010

2010

2010

2010

2010

2010

2010

2010

2010

2010

2010

2010

2010

2010

2010

2010

2010

2010

2010

2010

2010

2010

2010

2010

2010

2010

2010

2010

2010

2010

2010

2010

2010

2010

2010

2010

2010

2010

2010

2010

2010

2010

2010

2010

2010

2010

2010

2010

2010

2010

2010

2010

2010

2010

2010

2010

2010

2010

2010

2010

2010

2010

2010

2010

2010

2010

2010

2010

2010

2010

2010

2010

2010

2010

2010

2010

2010

2010

2010

2010

2010

2010

2010

2010

2010

2010

2010

2010

2010

2010

2010

2010

2010

2010

2010

2010

2010

2010

2010

2010

2010

2010

2010

2010

2010

2010

2010

2010

2010

2010

2010

2010

2010

2010

2010

2010

2010

2010

2010

2010

2010

2010

2010

2010

2010

2010

2010

2010

2010

2010

2010

2010

2010

2010

2010

2010

2010

2010

2010

2010

2010

2010

2010

2010

2010

2010

2010

2010

2010

2010

2010

2010

2010

2010

2010

2010

2010

2010

2010

2010

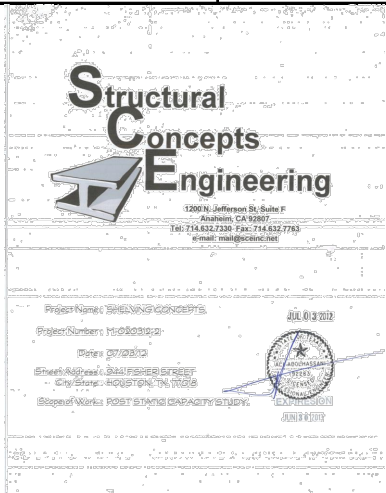
2010

2010

2010


2010

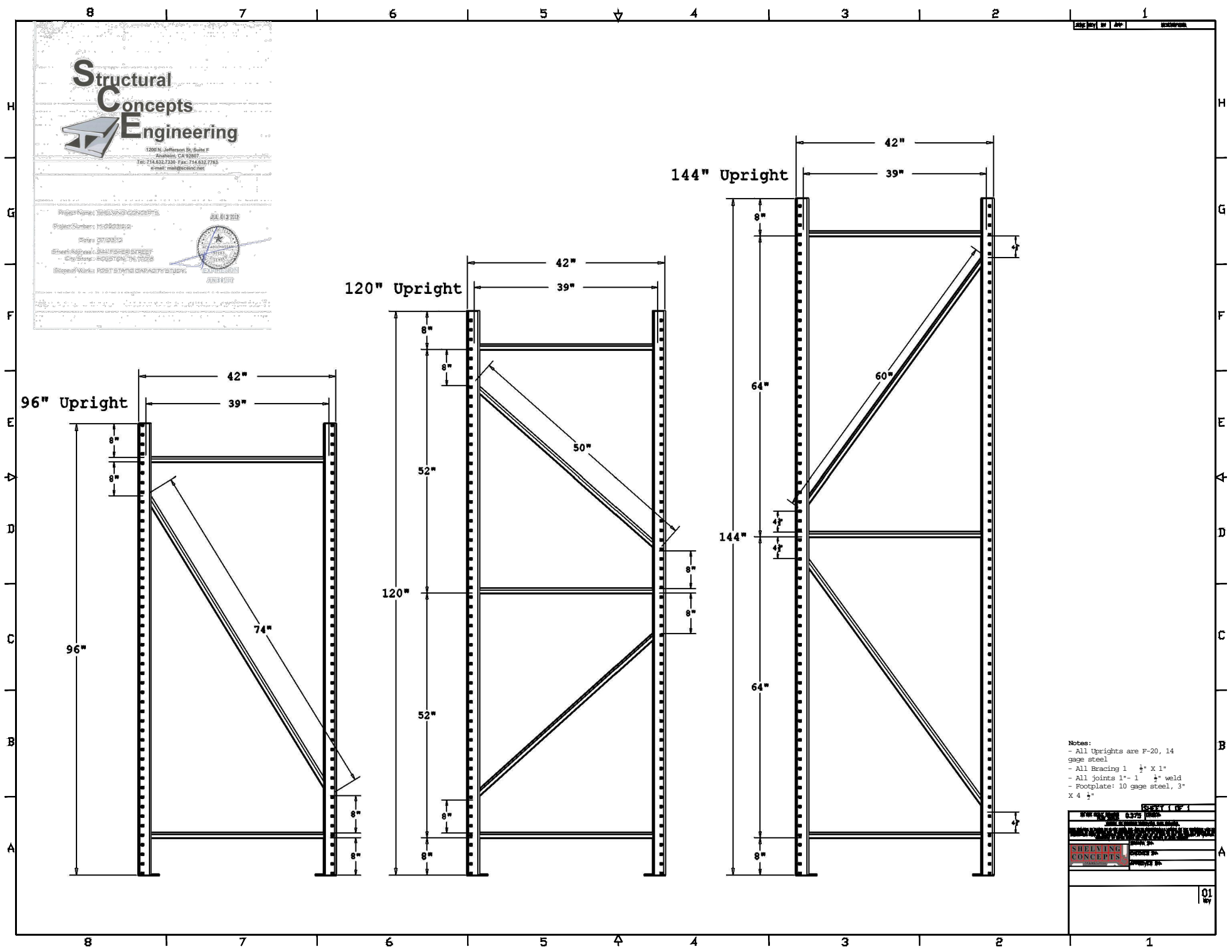
2010

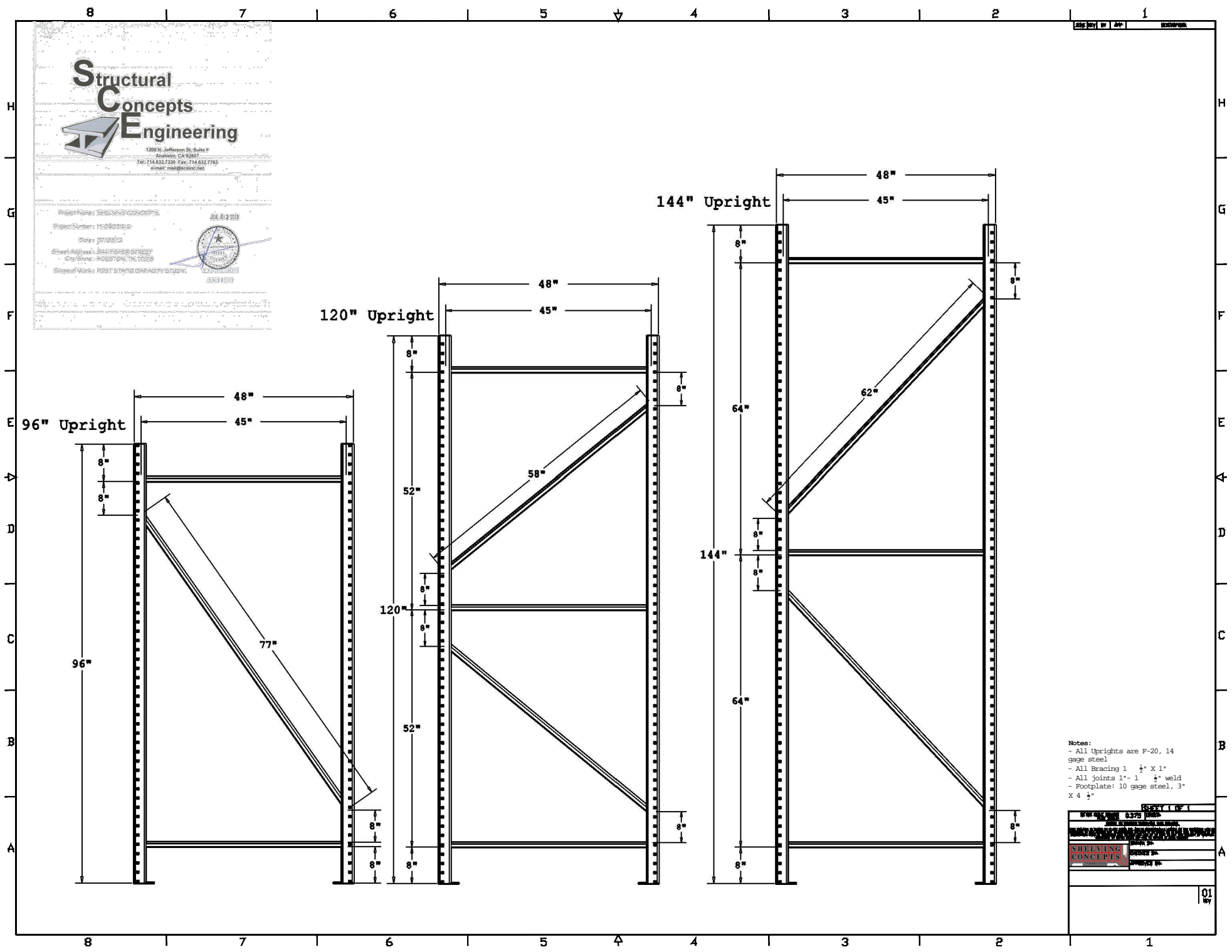


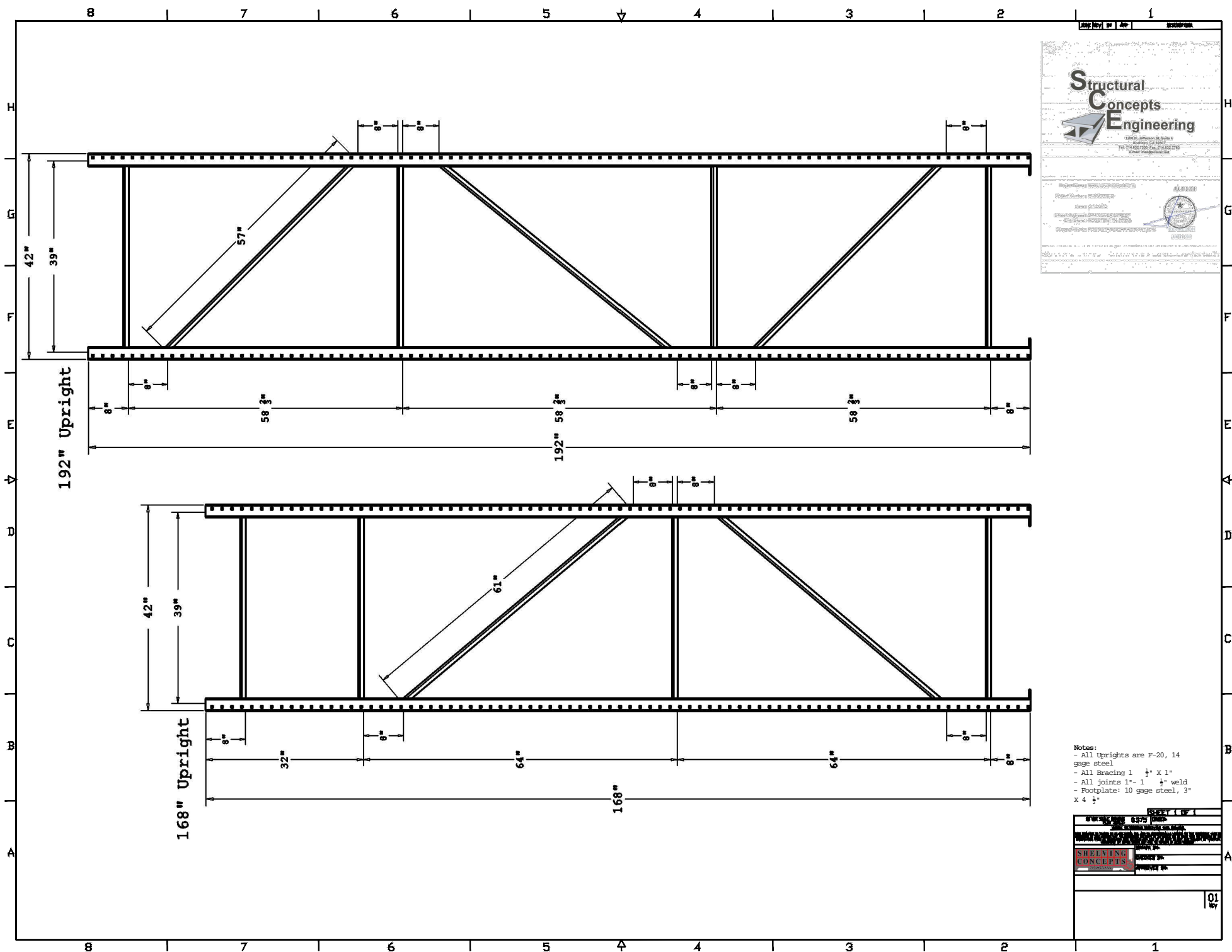
Notes:

- All Uprights are F-20, 14 gage steel
- All Bracing 1 $\frac{1}{2}$ " X 1"
- All joints 1" - 1 $\frac{1}{2}$ " weld
- Footplate: 10 gage steel, 3" X 4 $\frac{1}{2}$ "

<div style="float: right;">COPY 1 of 1</div> <div style="clear: both;"></div> <div style="display: flex; justify-content: space-between;"> <div>  </div> <div> <p>0375 1000</p> <p>000000 30</p> <p>000000 30</p> <p>000000 30</p> </div> </div>	
<div style="float: right;">01 May</div> <div style="clear: both;"></div>	





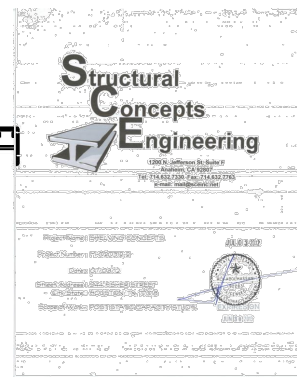
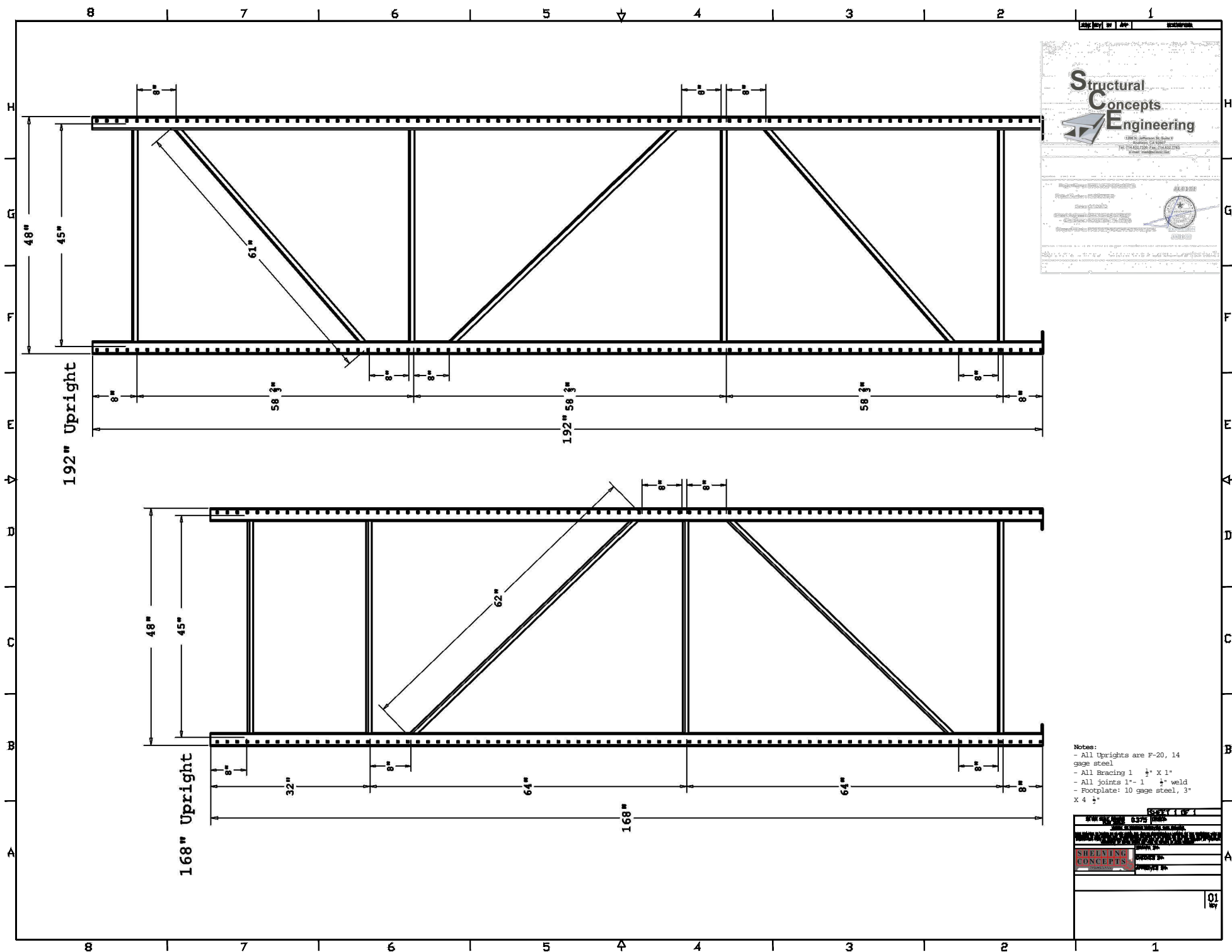


Structural Concepts Engineering
 1200 N. Jefferson St. Suite 100
 Houston, TX 77002
 Tel: 713.462.1000 Fax: 713.462.1001
 Email: info@scenr.com

Professional Engineer
 State of Texas
 License No. 10000

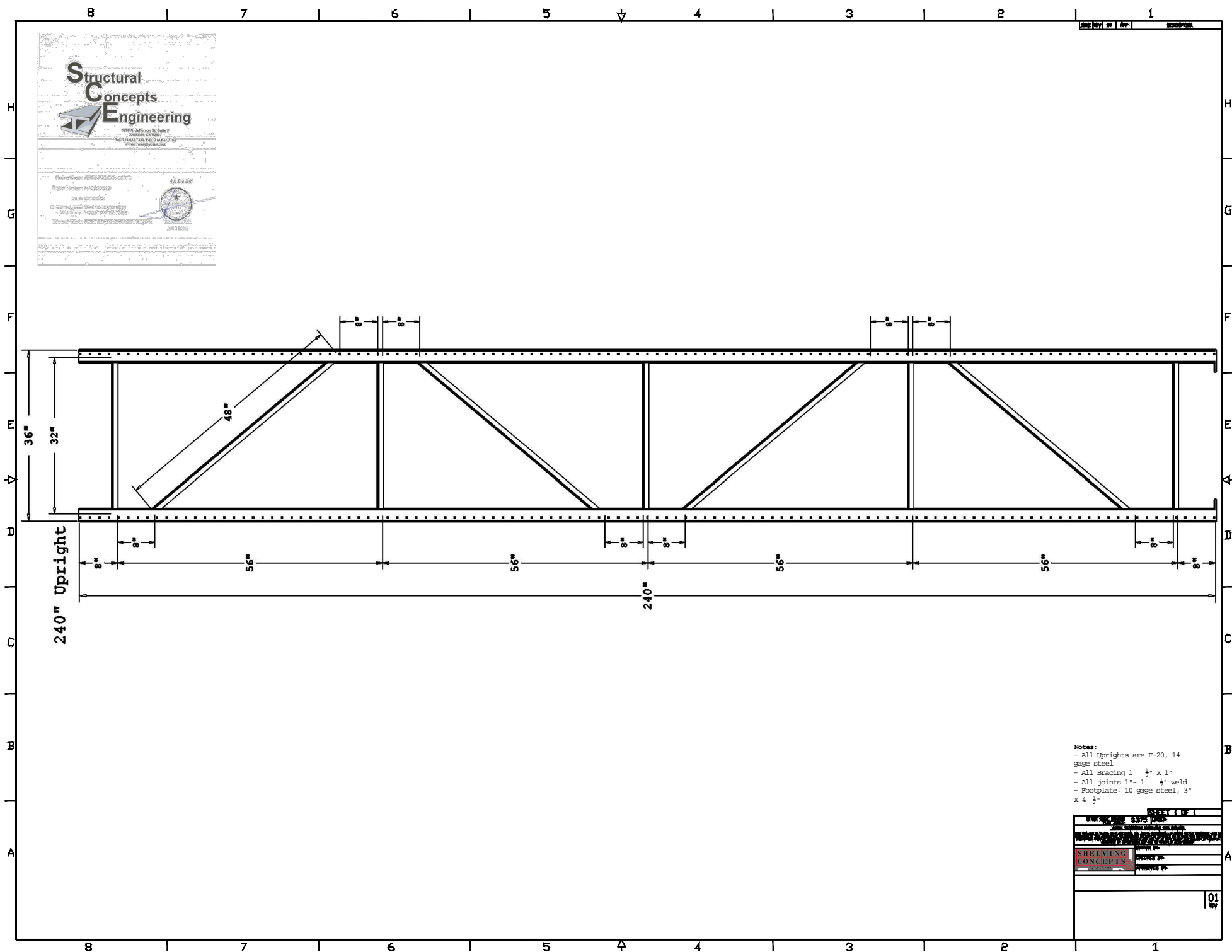
- Notes:
- All Uprights are F-20, 14 gage steel
 - All Bracing 1 1/2" X 1"
 - All joints 1" - 1 1/2" X 1" weld
 - Footplate: 10 gage steel, 3" X 4 1/2"

PROJECT NO. 1	01
DATE: 01/15/10	BY: [Signature]
DESIGNED BY: [Signature]	CHECKED BY: [Signature]
APPROVED BY: [Signature]	DATE: 01/15/10
PROJECT NAME: [Redacted]	
PROJECT LOCATION: [Redacted]	
PROJECT DESCRIPTION: [Redacted]	
PROJECT OWNER: [Redacted]	
PROJECT MANAGER: [Redacted]	
PROJECT ENGINEER: [Redacted]	
PROJECT ARCHITECT: [Redacted]	
PROJECT CONSULTANT: [Redacted]	
PROJECT CONTRACTOR: [Redacted]	
PROJECT SUBCONTRACTOR: [Redacted]	
PROJECT VENDOR: [Redacted]	
PROJECT MATERIALS: [Redacted]	
PROJECT EQUIPMENT: [Redacted]	
PROJECT SERVICES: [Redacted]	
PROJECT COST: [Redacted]	
PROJECT BUDGET: [Redacted]	
PROJECT SCHEDULE: [Redacted]	
PROJECT RISK: [Redacted]	
PROJECT STATUS: [Redacted]	
PROJECT COMMENTS: [Redacted]	



- Notes:**
- All Uprights are F-20, 14 gage steel
 - All Bracing 1 1/2" x 1"
 - All joints 1" - 1 1/2" x 1" weld
 - Footplate: 10 gage steel, 3" x 4 1/2"

PROJECT: 101	
DATE: 01/15/10	BY: [Signature]
REVISION: 01	BY: [Signature]
REVISION: 02	BY: [Signature]
REVISION: 03	BY: [Signature]
REVISION: 04	BY: [Signature]
REVISION: 05	BY: [Signature]
REVISION: 06	BY: [Signature]
REVISION: 07	BY: [Signature]
REVISION: 08	BY: [Signature]
REVISION: 09	BY: [Signature]
REVISION: 10	BY: [Signature]
REVISION: 11	BY: [Signature]
REVISION: 12	BY: [Signature]
REVISION: 13	BY: [Signature]
REVISION: 14	BY: [Signature]
REVISION: 15	BY: [Signature]
REVISION: 16	BY: [Signature]
REVISION: 17	BY: [Signature]
REVISION: 18	BY: [Signature]
REVISION: 19	BY: [Signature]
REVISION: 20	BY: [Signature]
REVISION: 21	BY: [Signature]
REVISION: 22	BY: [Signature]
REVISION: 23	BY: [Signature]
REVISION: 24	BY: [Signature]
REVISION: 25	BY: [Signature]
REVISION: 26	BY: [Signature]
REVISION: 27	BY: [Signature]
REVISION: 28	BY: [Signature]
REVISION: 29	BY: [Signature]
REVISION: 30	BY: [Signature]
REVISION: 31	BY: [Signature]
REVISION: 32	BY: [Signature]
REVISION: 33	BY: [Signature]
REVISION: 34	BY: [Signature]
REVISION: 35	BY: [Signature]
REVISION: 36	BY: [Signature]
REVISION: 37	BY: [Signature]
REVISION: 38	BY: [Signature]
REVISION: 39	BY: [Signature]
REVISION: 40	BY: [Signature]
REVISION: 41	BY: [Signature]
REVISION: 42	BY: [Signature]
REVISION: 43	BY: [Signature]
REVISION: 44	BY: [Signature]
REVISION: 45	BY: [Signature]
REVISION: 46	BY: [Signature]
REVISION: 47	BY: [Signature]
REVISION: 48	BY: [Signature]
REVISION: 49	BY: [Signature]
REVISION: 50	BY: [Signature]
REVISION: 51	BY: [Signature]
REVISION: 52	BY: [Signature]
REVISION: 53	BY: [Signature]
REVISION: 54	BY: [Signature]
REVISION: 55	BY: [Signature]
REVISION: 56	BY: [Signature]
REVISION: 57	BY: [Signature]
REVISION: 58	BY: [Signature]
REVISION: 59	BY: [Signature]
REVISION: 60	BY: [Signature]
REVISION: 61	BY: [Signature]
REVISION: 62	BY: [Signature]
REVISION: 63	BY: [Signature]
REVISION: 64	BY: [Signature]
REVISION: 65	BY: [Signature]
REVISION: 66	BY: [Signature]
REVISION: 67	BY: [Signature]
REVISION: 68	BY: [Signature]
REVISION: 69	BY: [Signature]
REVISION: 70	BY: [Signature]
REVISION: 71	BY: [Signature]
REVISION: 72	BY: [Signature]
REVISION: 73	BY: [Signature]
REVISION: 74	BY: [Signature]
REVISION: 75	BY: [Signature]
REVISION: 76	BY: [Signature]
REVISION: 77	BY: [Signature]
REVISION: 78	BY: [Signature]
REVISION: 79	BY: [Signature]
REVISION: 80	BY: [Signature]
REVISION: 81	BY: [Signature]
REVISION: 82	BY: [Signature]
REVISION: 83	BY: [Signature]
REVISION: 84	BY: [Signature]
REVISION: 85	BY: [Signature]
REVISION: 86	BY: [Signature]
REVISION: 87	BY: [Signature]
REVISION: 88	BY: [Signature]
REVISION: 89	BY: [Signature]
REVISION: 90	BY: [Signature]
REVISION: 91	BY: [Signature]
REVISION: 92	BY: [Signature]
REVISION: 93	BY: [Signature]
REVISION: 94	BY: [Signature]
REVISION: 95	BY: [Signature]
REVISION: 96	BY: [Signature]
REVISION: 97	BY: [Signature]
REVISION: 98	BY: [Signature]
REVISION: 99	BY: [Signature]
REVISION: 100	BY: [Signature]



Structural Concepts Engineering

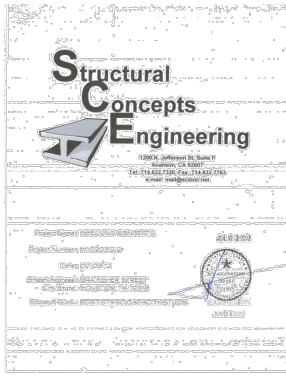
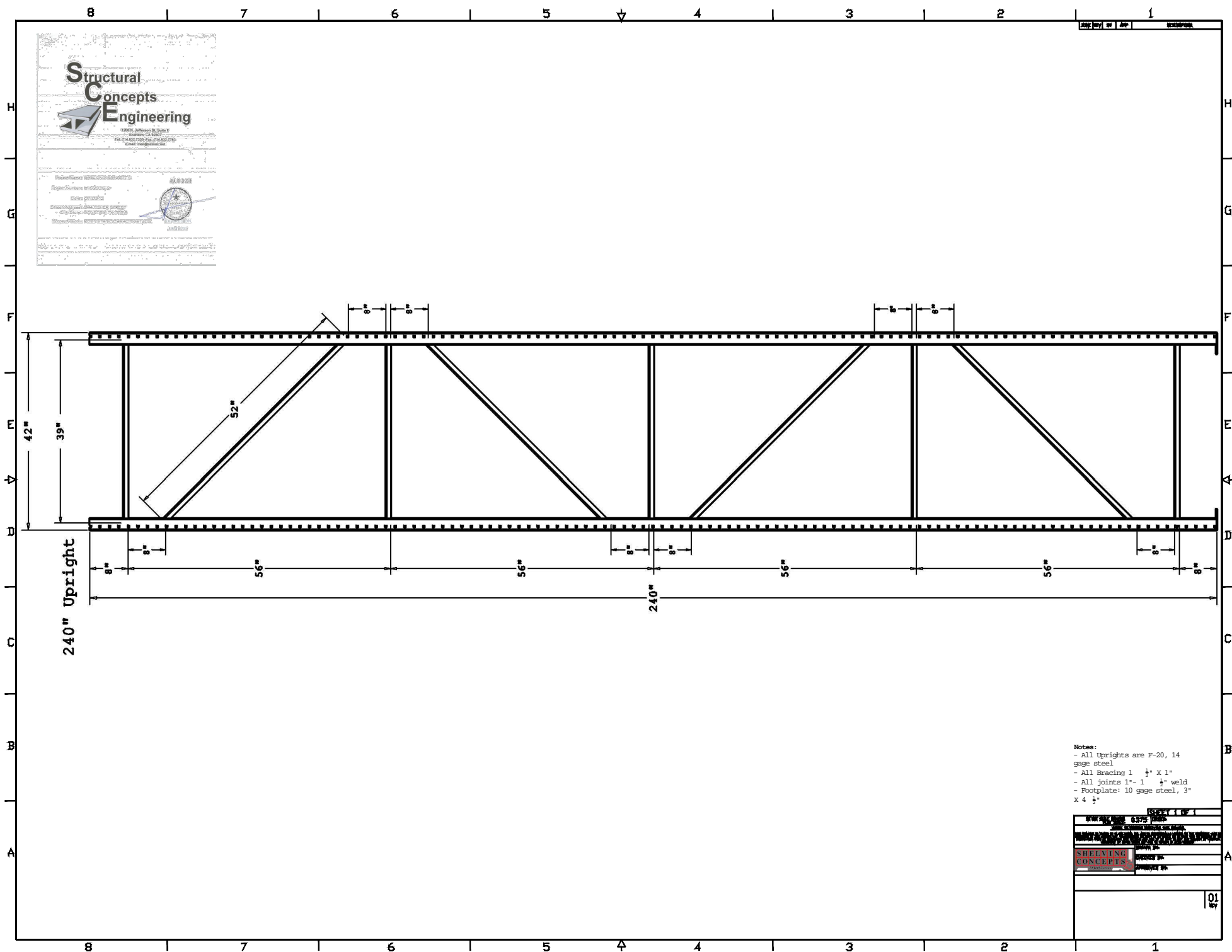
1000 N. Jefferson St. Suite 100
Bloomington, IL 61820
Tel: 312.331.1111
Fax: 312.331.1112
Email: info@sc-engineering.com

Project: SHELVING CONCEPTS
Drawing: SHELVING CONCEPTS
Scale: 1/4" = 1'-0"

DATE: 01/11/11

- Notes:
- All Uprights are F-20, 14 gage steel
 - All Bracing 1 1/2" X 1"
 - All joints 1" - 1 1/2" weld
 - Footplate: 10 gage steel, 3" X 4 1/2"

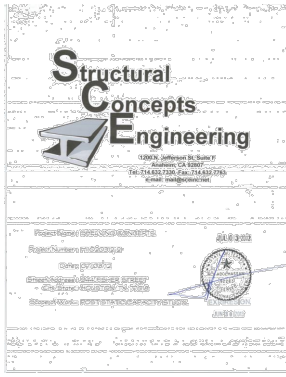
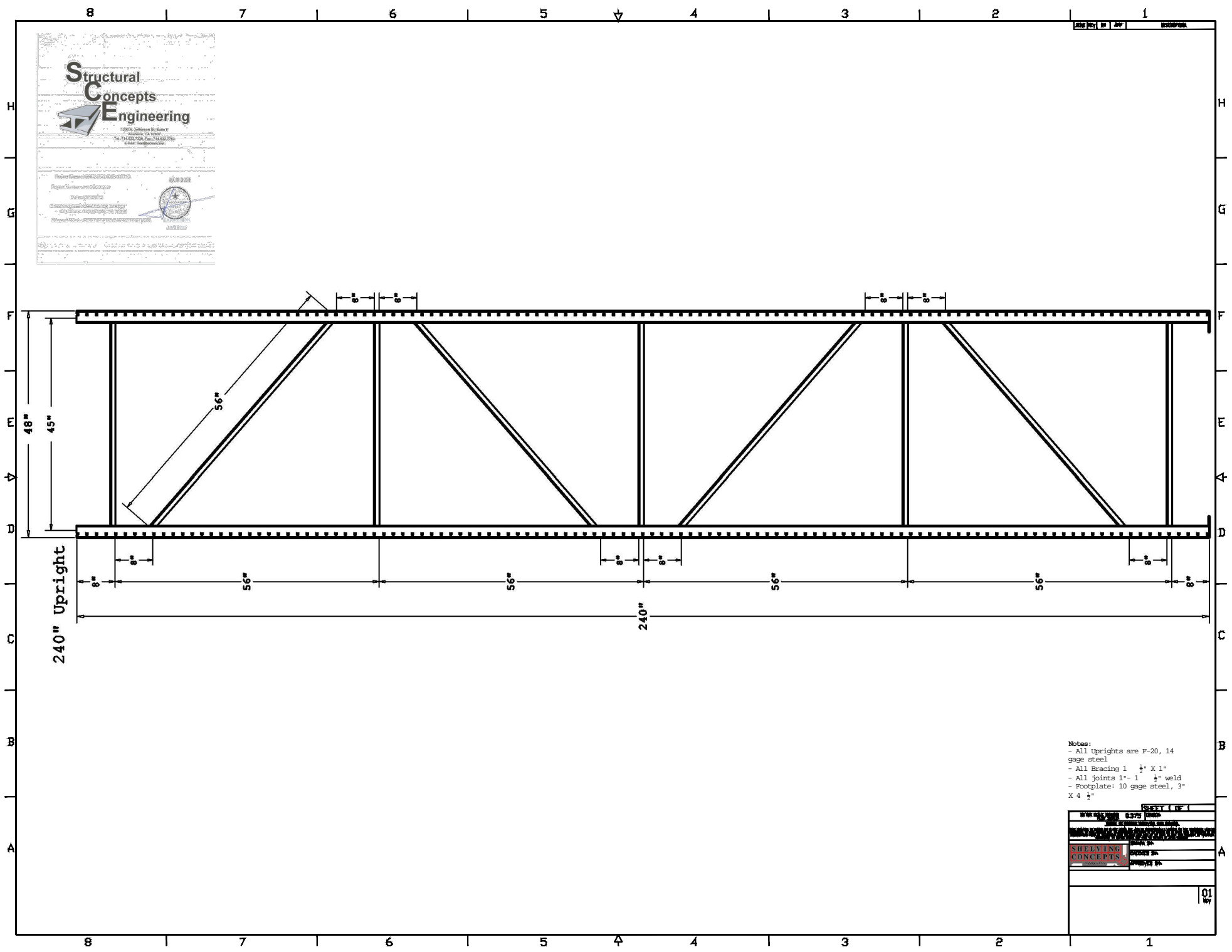
DATE: 01/11/11	PROJECT: SHELVING CONCEPTS
DRAWN BY: [REDACTED]	CHECKED BY: [REDACTED]
APPROVED BY: [REDACTED]	DATE: 01/11/11
SHELVING CONCEPTS	
01	



Notes:

- All Uprights are F-20, 14 gage steel
- All Bracing 1 1/2" X 1"
- All joints 1" - 1 1/2" weld
- Footplate: 10 gage steel, 3" X 4 1/2"

PROJECT NO. 1	DATE 10/1/10
DESIGNED BY [Signature]	CHECKED BY [Signature]
DRAWN BY [Signature]	PROJECT MANAGER [Signature]
SHELVING CONCEPTS	
01	



- Notes:
- All Uprights are F-20, 14 gage steel
 - All Bracing 1 1/2" X 1"
 - All joints 1" - 1 1/2" weld
 - Footplate: 10 gage steel, 3" X 4 1/2"

SHEET 1 OF 1	
DATE: 01/17/2018	BY: J. L. H. 1
DESIGNED BY: J. L. H. 1	CHECKED BY: J. L. H. 1
APPROVED BY: J. L. H. 1	DATE: 01/17/2018
SHELVING CONCEPTS	
01	

