

Widespan Storage System



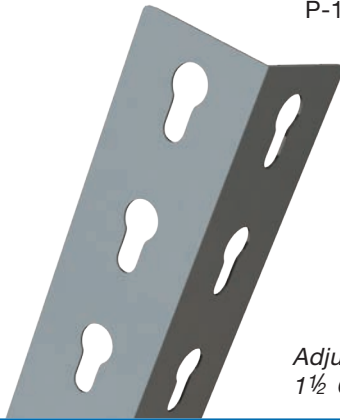
Dixie
SHELVING

A Division of Shelving Concepts, Inc.

Today's Organization is Tomorrow's Profits

**Angle Post
14 GA**

1 9/16" x 1 9/16"



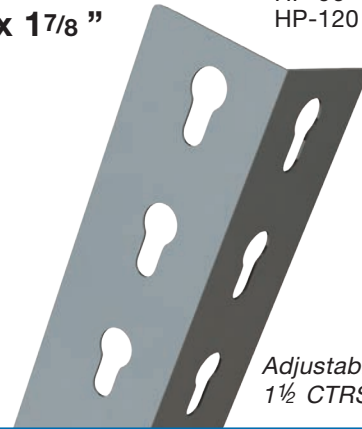
Product Number

- P-72
- P-84
- P-96
- P-120

*Adjustable on
1 1/2" CTRS*

**Heavy Duty
Angle Post
14 GA**

1 7/8" x 1 7/8"



Product Number

- HP-72
- HP-84
- HP-96
- HP-120

*Adjustable on
1 1/2" CTRS*

Post Capacity Ratings

(Based on 4 post per bay).

1 9/16" x 1 9/16"

Post

Opening	Capacity
12" -	10,000
18" -	9,900
24" -	9,600
30" -	9,150
36" -	8,550
42" -	7,875
48" -	7,100

1 7/8" x 1 7/8"

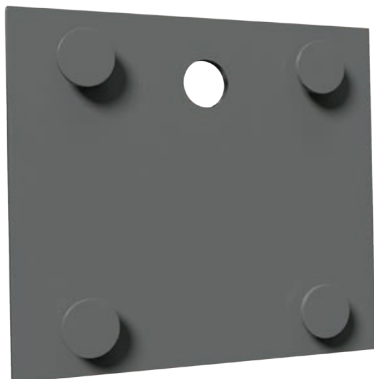
Post

Opening	Capacity
12" -	10,000
18" -	9,900
24" -	9,750
30" -	9,500
36" -	9,275
42" -	8,500
48" -	8,500

Rating based on unsupported opening.

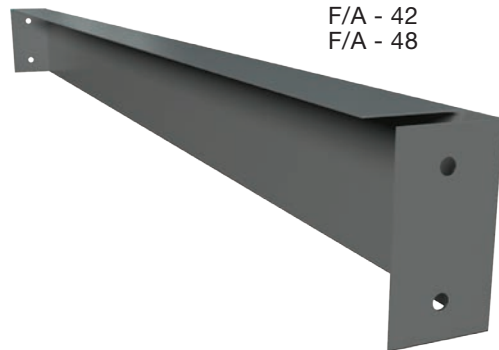
**Connector
Plate**

2 27/32" x 2 1/4"



**Fore & Aft
Braces**

2 19/32" x 1 5/16"



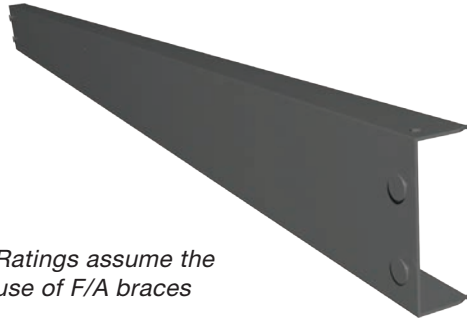
Product Number

- F/A - 12
- F/A - 18
- F/A - 24
- F/A - 30
- F/A - 32
- F/A - 36
- F/A - 42
- F/A - 48

**Two rivet
Channel
Beam
14GA**

Product Number	Capacity
48 - 2RCB	2,715
60 - 2RCB	2,157
69 - 2RCB	2,020
72 - 2RCB	1,787
84 - 2RCB	1,356
96 - 2RCB	982

3 1/8" x 1 1/8"

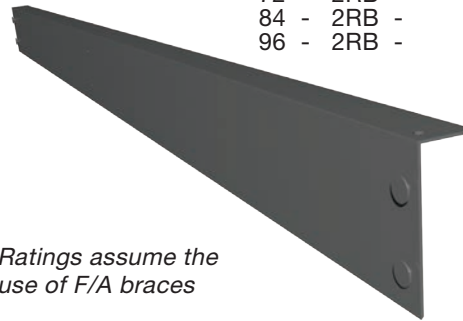


Ratings assume the use of F/A braces

**Two Rivet
Beam
14 GA**

Product Number	Capacity
12 - 2RB	3,235
18 - 2RB	2,850
24 - 2RB	2,508
30 - 2RB	1,996
32 - 2RB	1,885
36 - 2RB	1,665
42 - 2RB	1,437
48 - 2RB	1,249
54 - 2RB	1,165
60 - 2RB	1,005
69 - 2RB	978
72 - 2RB	849
84 - 2RB	724
96 - 2RB	585

2 27/32" x 1 1/4"



Ratings assume the use of F/A braces

General Information

All material is treated and powder coated.

To determine clear opening, deduct Post width from bay opening.

Units GROW 1/2" both ways plus 1/4" growth for End to End or Back to Back units.

Rated capacities assume the use of F/A Braces.

One F/A for 48", 54" and 60" lengths and three (3) F/A Braces for 69", 72", 84" and 96" lengths. Level rating capacities are based on the longest beam on the level.



Limited Warranty



Dixie Shelving Warrants goods purchased

here under to be free of defects in

materials and workmanship (finish excluded) for a period of one (1) year from date of shipment. This warranty shall not apply in event goods are damaged as a result of misuse, abuse, neglect, accident, improper application, modification or repair by persons not authorized by seller or damaged during shipment.

All implied warranties, including but not limited to warranties of merchantability and fitness for a particular purpose are hereby excluded.

Buyers remedy, if any, for any defective goods shall be limited to refund by seller or replacement of goods at sellers option, and shall in no event include damages of any kind, whether incidental, consequential or otherwise.

No goods accepted for return without prior approval. Seller shall have the right to inspect goods claimed to be defective at buyers place of business or require buyer to return the goods to seller for inspection on seller's premises. Transportation charges borne by seller only if goods are proven defective under warranty.

Widespan
Storage System



Dixie
SHELVING
A Division of Shelving Concepts, Inc.

944 Fisher • Houston, Texas 77018 • 713.957.1111 • Fax: 713.957.1133 • 1-800-474.3531

www.dixieshelving.com